

**RUSH
WITT &
WILSON**



**31 Cornwall Road, Bexhill-On-Sea, East Sussex TN39 3JN
£299,950**

A three bedroom terraced Victorian house, in need of modernisation, situated in the highly convenient location of Bexhill Town Centre, within easy reach of Bexhill Seafront, Bexhill Train Station and Bexhill Town, with its wide range of amenities. Offering spacious accommodation throughout, the property comprises, living/dining room, kitchen, bathroom, three double bedrooms, gas central heating system and double glazing throughout. Externally, the property offers low maintenance, westerly facing rear gardens. Offered with NO ONWARD CHAIN. Viewing comes highly recommended by Rush, Witt & Wilson Sole Agents. Council Tax Band C. EPC TBC.



Entrance Hallway

With entrance door, double radiator, stairs leading to first floor.

Living/Dining Room

24'11" x 11'5" (7.60 x 3.50)

Bay window to the front, double glazed window overlooking rear garden, two double radiators, feature fire place with electric fire.

Kitchen/Breakfast Room

11'5" x 9'2" (3.50 x 2.80)

Fitted kitchen with a range of wall and base level units with laminate work stop surfaces, one half bowl sink with drainer and hot and cold tap, space for cooker, space for under counter fridge & freezer, plumbing for washing machine, double glazed window overlooking side elevation. Kitchen also housing the gas central heating boiler.

Bathroom

Suite comprising, sunken bath with hot and cold tap, wall mounted shower with controls, chrome shower attachment and shower head, vanity unit with wash hand basin and hot and cold tap, w/c low level flush, double radiator, obscured double glazed window to the side.

Lean to

With fitted shelving and seating.

First Floor Landing

Access to loft space via two hatches

Bedroom One

13'9" x 12'7" (4.20 x 3.84)

Bay window overlooking the front, double radiator, single radiator, built in wardrobes cupboards with fitted shelving and hanging space.

Bedroom Two

15'8" x 9'2" (4.80 x 2.81)

Window overlooking rear gardens and side, double radiator, feature fireplace, airing cupboard with fitted shelving and hot water tank.

Separate W/C

Obscured window overlooking the side, w/c low level flush.

Bedroom Three

11'9" x 9'6" (3.60 x 2.90)

Window overlooking rear elevations, double radiator.

Outside**Front of Property**

Small courtyard suitable for wheelie bin storage.

Rear Garden

Westerly facing, low maintenance rear garden, coming mainly patioed with raised flower beds, various seating areas.

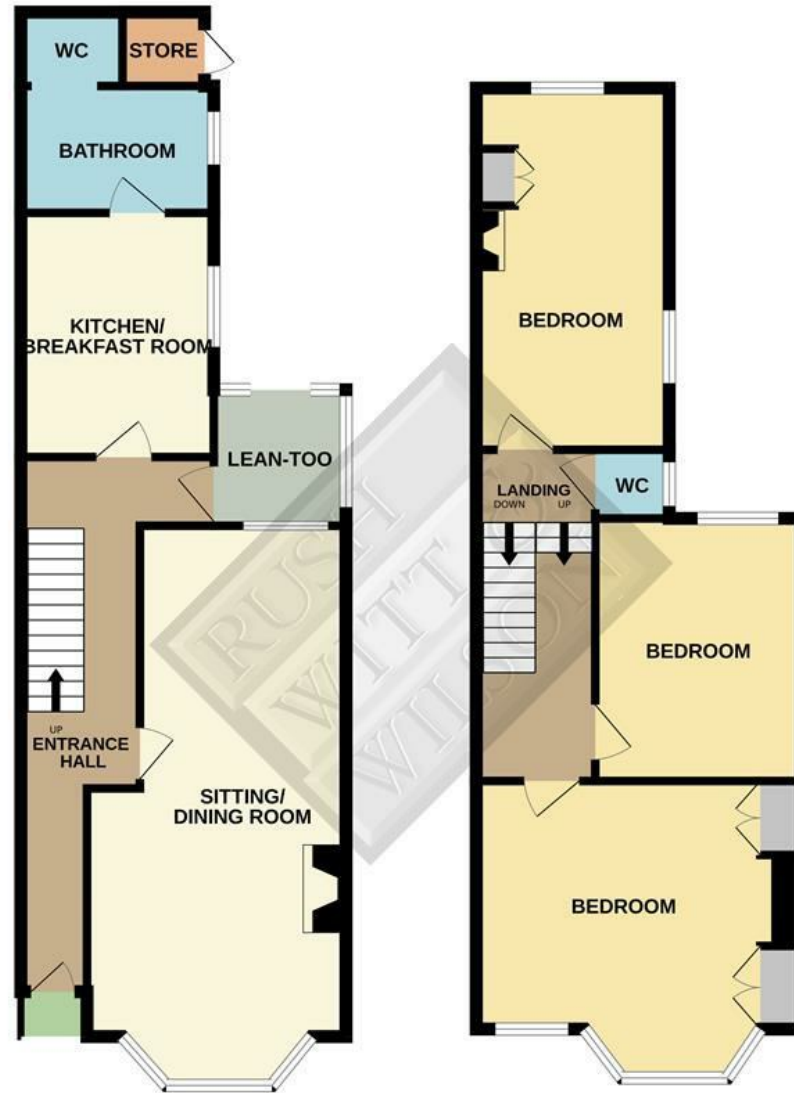
Agents Notes

None of the services or appliances mentioned in these sale particulars have been tested. It should also be noted that measurements quoted are given for guidance only and are approximate and should not be relied upon for any other purpose.



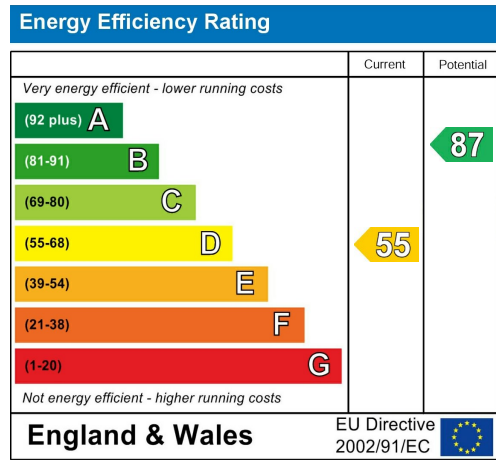
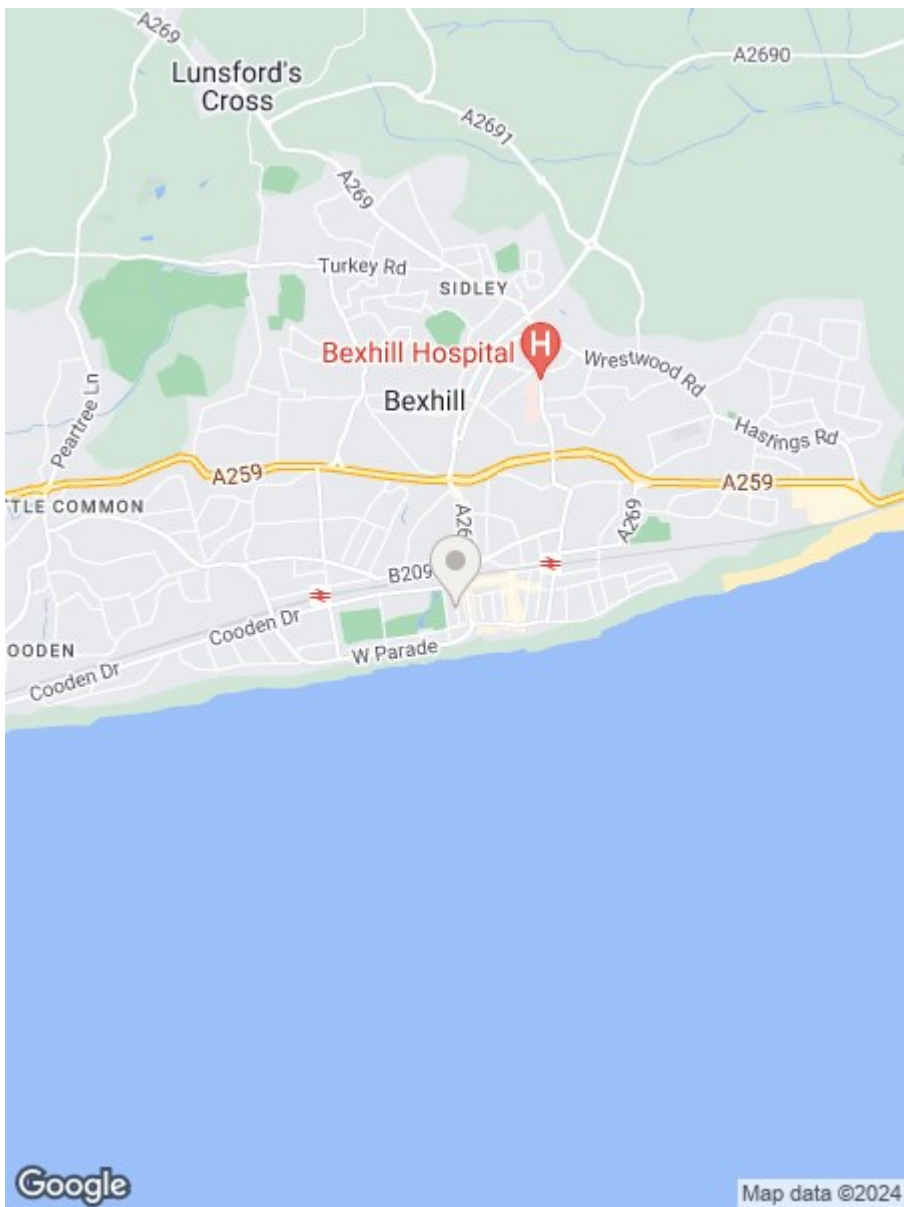
GROUND FLOOR
612 sq.ft. (56.9 sq.m.) approx.

1ST FLOOR
612 sq.ft. (56.9 sq.m.) approx.



TOTAL FLOOR AREA: 1225 sq.ft. (113.8 sq.m.) approx.

Whilst every attempt has been made to ensure the accuracy of the floorplan contained here, measurements of doors, windows, rooms and any other items are approximate and no responsibility is taken for any error, omission or mis-statement. This plan is for illustrative purposes only and should be used as such by any prospective purchaser. The services, systems and appliances shown have not been tested and no guarantee as to their operability or efficiency can be given.
Made with Metropro ©2023



**RUSH
WITT &
WILSON**

**Residential Estate Agents
Lettings & Property Management**



**3 Devonshire Road
Bexhill-on-Sea
East Sussex
TN40 1AH
Tel: 01424 225588
bexhill@rushwittwilson.co.uk
www.rushwittwilson.co.uk**